

CORNISE

ASSEMBLY AND INSTALLATION MANUAL

In order to assembly and install the linear light Cornise, it is needed to follow the instructions below by drilling the necessary holes on the profiles.

The required tools are shown below.



Drill screwdriver with set of iron drills & tap drill M3



Soldering iron



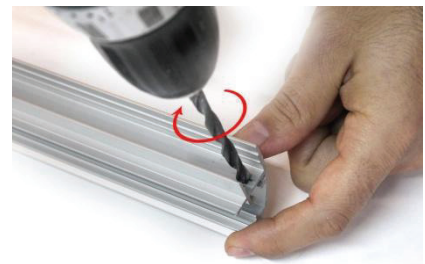
Screwdriver Phillips
Set of Allen keys

Preparation steps

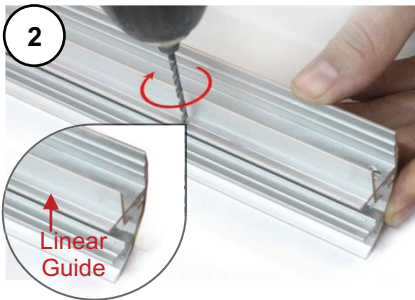


In the recess of Cornise profile near the edge where the Led strip is placed, to ensure the safe passage of the Led strip power cables, a hole of suitable diameter has to be opened.

The hole should be placed as closer as possible, to the edge of the profile.

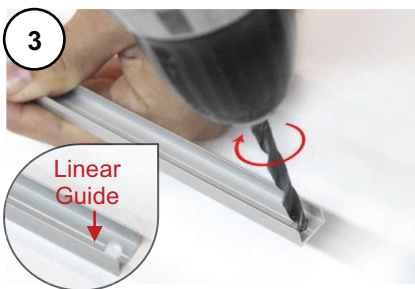


Notice: The hole should be opened, only on the profile's surface, where the Led strip placed and not below this level.



On Cornise profile using the linear guide, drill two holes with diameter 2.5mm at a distance of 50cm between them.

Then use tap drill size M3, on each hole with diameter 2.5mm, to create thread.



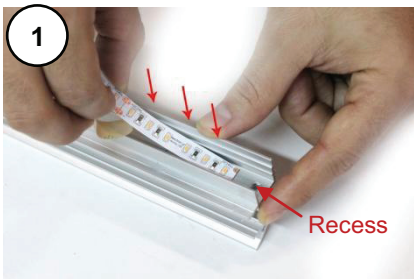
From one side at a distance of few millimeters from the edge of the "Π" shape profile on one side, open the appropriate diameter hole for the power cables, using the linear guide.

Mark and drill three holes per profile meter, in order to fastening on a solid surface. The distance between them should be 40cm and use the appropriate diameter for the fastening screws.

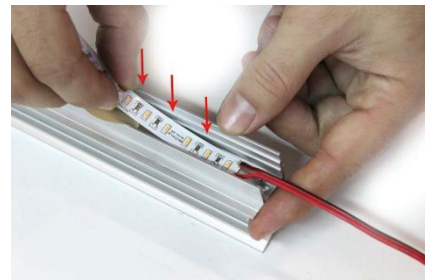


Assembly procedure

Notice: At this point and according to the installation, you can solder the power cables on the Led strip or if the cables are coming through the solid surface, you can solder them later.



Center the Led strip compare to the recess Cornise profile and stick it by removing gradually the protective paper covering the back side of the strip.

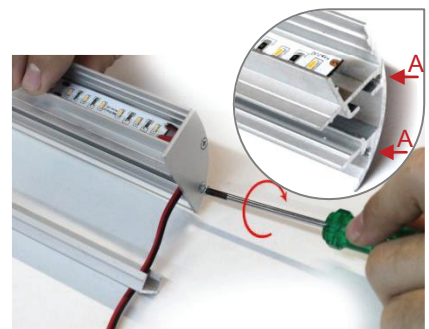


Notice: Pressure the Led strip across its length, to make sure that it has correctly stuck on the profile, without touching the top surface of the Led.



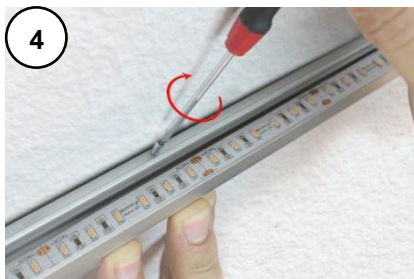
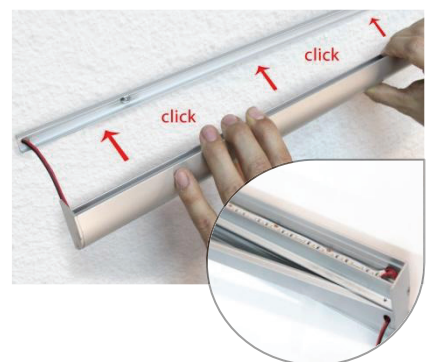
Connect the power cables of the Led strip with the power supply, by routing the cables through the feed holes on both profiles.

Fasten two end caps on both end sides of Cornise, by screwing the flat head screws (which are included with the profile), on both specially designed points (A) with round shape.



Fasten the "Π" shape profile on the solid surface with the screws that have been selected.

On the "Π" shaped profile, clip on Cornise profile using the specially shaped recess which located on the rear side.



Secure the position of the linear light Cornise by screwing and tighten the headless allen screws, in the holes on top surface of Cornise profile.

Clip on the plastic cover on the profile's recess, where the Led strip is placed.

